


ALUMNI PARK BY THE NUMBERS

1.3 Size of
the park
in acres

7,877 
Trees, shrubs, grasses, and perennials planted

500 
Linear feet of improved shoreline

30,000 
Weight in pounds of the granite fountain in the park's welcome plaza, with the ripples in the stone symbolizing the widening circles of alumni influence radiating outward to the world

50 Park exhibits, including
sculptures, statues, panels,
and inscriptions 

75,000 
Gallons of water per week recirculated through the fountain — more than what is contained in an Olympic-sized pool

4,000 
Donors who contributed to the creation of Alumni Park and One Alumni Place

10,000 
Gallon capacity of the tank that will capture stormwater runoff from the Red Gym to be used in the park's irrigation system

207 Alumni names inscribed
in the park: 123 featured
alumni plus 84 donors
and contributors 

347 
Number of truckloads of concrete that it took to create the slab beneath the underground loading dock

7 Height in feet of the Lantern, a lit-from-within cone with laser-cut imagery of 10 decades of university culture



0 Cost to visit Alumni Park

1 Home base on campus for alumni: One Alumni Place

9,181



Distance in miles from Progress Point in the park to the Amundsen-Scott South Pole Station in Antarctica, home of the UW-sponsored IceCube Neutrino Observatory — the farthest distance recorded on the bearing lines emanating from the Numen Lumen inlaid insignia (as measured by Google Earth)

4  Number of alumni Nobel Prize laureates featured in park exhibits

8  Height in feet of *Well Red*, the bronze-and-glass Bucky Badger statue

470



Number of bike-parking spaces near Alumni Park

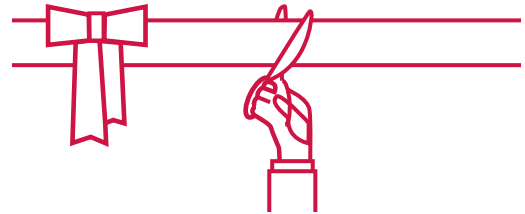
17 Number of boat slips at the Goodspeed Family Pier



80 

Length in feet of the Badger Pride Wall featuring Madison artist Nate Koehler's whimsical renditions of UW icons

6 The day when Alumni Park and One Alumni Place officially open: October 6, 2017



LOCATION

724 Langdon Street, Madison

On the shore of Lake Mendota between Memorial Union and the Red Gym

HOURS

Alumni Park is FREE to visit and open 365 days a year.

STAY CONNECTED

 [facebook.com/alumnipark](https://www.facebook.com/alumnipark)

 [@uwalumnipark](https://twitter.com/uwalumnipark)

 [@alumnipark](https://www.instagram.com/alumnipark)

 AlumniPark.com

